

Feature table Goelst G-Motion

Standard functions

| | |
|-------------------------------------|------------|
| Soft launching speed | ✓ |
| Soft docking speed | ✓ |
| Intermediate positions (adjustable) | 5 |
| Electric end positions (adjustable) | ✓ |
| Timer inside | ✓ |
| Green mode (low energy mode) | on request |

Programmable functions

| | |
|---|-----------------|
| Programming with IR remote control | ✓ |
| Programming with RF remote control | ✓ |
| Programming with external 2 NO dry contacts | ✓ |
| Programming with buttons on motor unit | ✓ |
| Programming with App | ✓ |
| Programming with customer software | ✓ |
| LED indicators | multicolour RGB |
| Reversible open and close directions | ✓ |
| Adjustable speed | 3 settings |
| Adjustable power | ✓ |
| CPS Adjustable Touch and go | 3 settings |
| CPS Adjustable Touch and hold | 3 settings |
| Adjustable sun sensor | 5 settings |
| Adjustable dawn sensor | 5 settings |

Control options

| | |
|---|----------|
| Switch on motor | ✓ |
| Infrared Receiver (IR) | external |
| Radio Frequency Receiver (RF) | internal |
| Smartphone / tablet / Home automation | ✓ |
| 2 NO dry contacts (pulse switch or relay) | ✓ |
| Dry contacts individual, group and master control | ✓ |
| 230VAC switching (2x Fase) | internal |
| RS232 | internal |
| RS485 | internal |
| Z-wave | internal |
| Bluetooth | internal |
| WiFi | internal |
| Dawn and dusk (connect sensor directly to motor) | ✓ |
| Timer control (external icw RF) | ✓ |
| Hotel Motion Sensor | ✓ |
| Showroom auto timer | ✓ |
| Alarm control (high speed) | ✓ |
| CPS Touch and GO | ✓ |
| CPS Touch and HOLD | ✓ |
| Manual override (motor) | ✓ |
| Manual operation (PRS Pilot Release System) | optional |

Installation

| | |
|---------------------|-----------|
| Motor left or right | ✓ |
| Motor-up | ✓ |
| Cable hiding system | ✓ |
| Ceiling fixing | 2 options |
| Wall fixing | 3 options |
| Suspended fixing | 2 options |
| Recessed fixing | 1 options |

Assembly types

| | |
|-------------------------------|---|
| Single stack | ✓ |
| Split stack | ✓ |
| Additional stacking positions | ✓ |
| Asymmetrical stack | ✓ |
| Intermediate pulley | ✓ |
| Extra small end pulley | ✓ |
| Standard track | ✓ |
| Recess track with flange | ✓ |

Curtain types

| | |
|---|---|
| Standard curtain (with and without overlap) | ✓ |
| Curtain with heading (with and without overlap) | ✓ |
| Swing (with and without overlap) | ✓ |
| Ripplefold* | ✓ |
| Flow (with and without overlap) Wave* | ✓ |

Technical specifications

| | |
|------------------------|---------------------------------------|
| Max. curtain weight | 40 Kg |
| Torque | 1.0 Nm |
| Max. system length | 14 meter |
| Bending radius | 20, 30, 40, 50, >100 cm |
| Shape types | special curves optional |
| Colours | white, natural metallic, black |
| Power connection wires | C7 plug, 24VDC plug or screw terminal |
| Voltage | 100-230VAC or 24VDC |
| Power supply | internal or external |
| Power | 230VAC, 1,5A or 24VDC, 45W |
| Nominal Speed | 14cm/sec |
| Noise level | < 35 dB(A) |
| Operating temperature | |
| IP code | IP40 |
| Insulation class | |
| Max. running time | |
| Certificate | CE-FCC |
| Dimensions (mm) | 55 x 85 x 300 (incl. adapter) |
| Weight | 1035gr (incl. adapter) |

* this brand is owned by a third party that has no connection with Goelst NL B.V.



G-Motion

Curtain track system powered by Goelst



NEW!

G-Motion Curtain track system powered by Goelst

- G-Motion modular design offers a great set of added functionalities, like curtain protection systems, tandem and duo support of motors, variety of input voltage.
- A variety of (open) protocols make it easy to integrate with any automation system.
- Compatible with a complete range of high quality curtain tracks and accessories.
- Impact resistant and bendable aluminum rails with powder coating enable silent and smooth glide.
- Self lubricating, UV-resistant gliders built from high quality materials, like Teflon®*.
- Custom options like bending the rail in various radii, custom-colours, made to measure for projects.
- Designed and built in Europe.
- Competitive pricing.

Motor housing

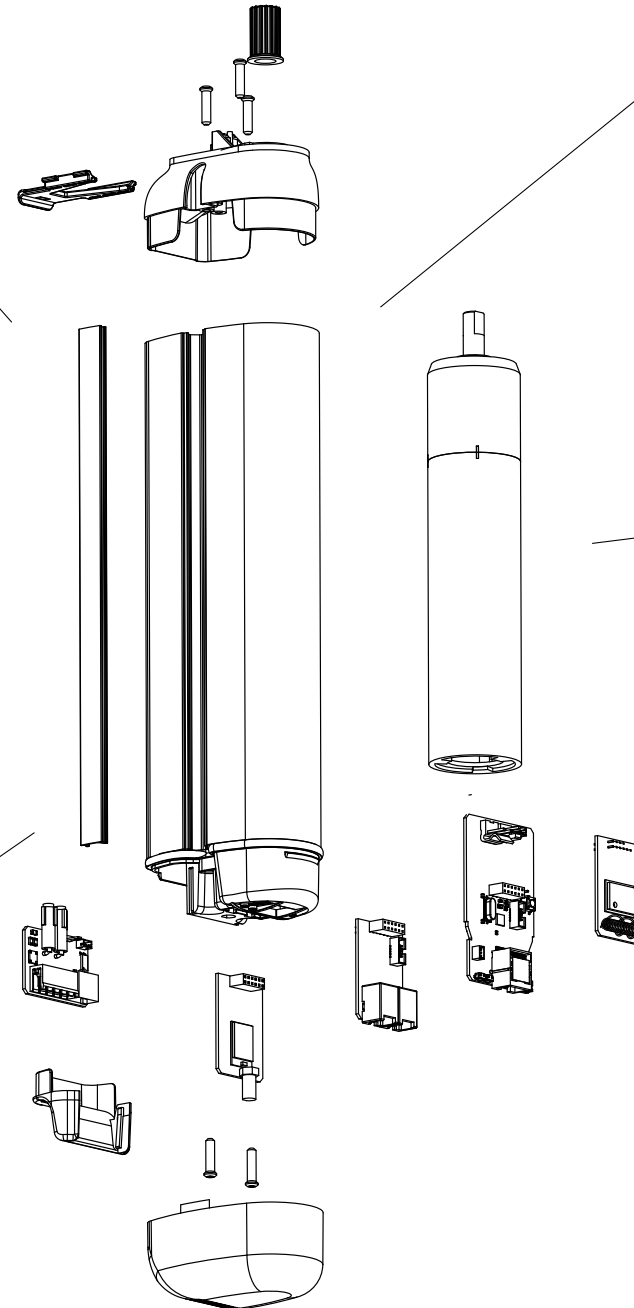
- Built-in cable channel with cover on both sides
- LED guide providing feedback about various programmable features
- Design bottom cover
- 100% replaceable with all earlier generations
- In white, black and grey

Input voltage

- 100-240VAC
- 24VDC
- Lithium battery + solar panel

Control options

- Dry contact
- Infrared
- RS 232
- WiFi Add-On
- Z-wave Add-On
- Zigbee Add-On
- RF Add-On
- RS 485 Add-On
- 230V switching



Motor

- 24V brushed motor
- Ultra silent, <35 dB, when used as a system with Goelst rails and components
- High tech CPS (Curtain Protection System) clutch for manual override, Touch and Go, and Touch and Hold

Curtain controller

- 2 End-positions and 5 intermediate positions
- Speed control: soft docking and launching speed
- Temperature sensor
- Curtain control pcb with 32 bit, 30Mhz, NXP processor
- 2 buttons for programming and curtain control
- RJ45 socket for external connections
- Sun and Dawn sensor connector
- 2 internal sockets for max. 3 Add-On control pcb's

* this brand is owned by a third party that has no connection with Goelst NL B.V.

For more information visit:
www.goelst.com or contact our sales
department on: **T +31 (0)318 648 100.**

